

RENDERCON® '5S'

Roof Top Screed

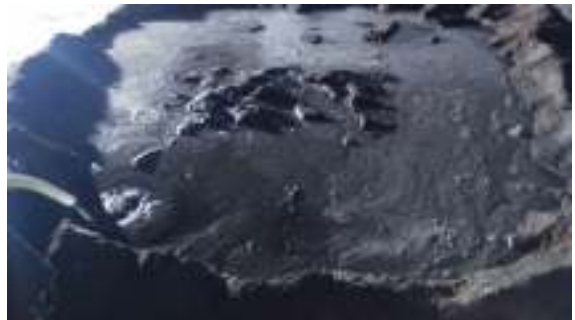
WORK DEFINITION

Conventional screed was planned on roof top, where the expectation was to make it better with hydrophobic admixture. Customer has seen our mock of RenderCon '5S' on plaster and wanted it to be implemented on rooftop in screed. The screed is about 25-40mm thick (maintaining required slope) with cement slurry poured on top.

WORK DONE

The following is the procedure adopted using RenderCon '5S' admixture.

- ★ **Cleaning the rooftop slab:** Unwanted litter like waste papers etc are removed by hand. Any additional treatment for roof top, if wished may be completed first. If you wish to apply bonding agent etc., may be applied. Water sprinkled and dry cement sprinkled over this water. (Alternately, cement+ water slurry may also be used here).
- ★ **Preparing the Mix:** Many batches of screed is prepared with 1:2:3 mix ratio using 1 sachet of RenderCon 5S for every bag of cement. Do not exceed a slump of about 100mm for this screed.
- ★ **Cement Slurry:** Cement slurry of required consistency for rooftop to obtain the desired finish is also prepared. RenderCon admixture is not required in this slurry.
- ★ **Spreading screed mix:** Screed mix is spread to approximate level and compacted.
- ★ **Pouring the slurry:** The slurry is poured over the screed and final finish is done.



Mix 1:2:3 ratio



Pouring slurry



Cutting grooves for grid lines

- ★ **Cutting grooves:** cut grooves as required
- ★ **Curing:** Curing is carried out for 10 days.
A curing of 3 days will be necessary.

